

**REGIONAL SPECIALISED METEOROLOGICAL CENTRE-TROPICAL CYCLONES, NEW DELHI
TROPICAL WEATHER OUTLOOK**

DEMS-RSMC TROPICAL CYCLONES NEW DELHI DATED 06.11.2021

TROPICAL WEATHER OUTLOOK FOR NORTH INDIAN OCEAN (THE BAY OF BENGAL AND ARABIAN SEA) VALID FOR NEXT 120 HOURS ISSUED AT 0600 UTC OF 06.11.2021 BASED ON 0300 UTC OF 06.11.2021.

BAY OF BENGAL:

A CYCLONIC CIRCULATION LAY OVER SOUTHEAST BAY OF BENGAL (BOB) AND ADJOINING EQUATORIAL INDIAN OCEAN, EXTENDING UPTO 3.1 KM ABOVE MEAN SEA LEVEL AT 0300 UTC OF TODAY. UNDER ITS INFLUENCE, A LOW PRESSURE AREA IS LIKELY TO FORM OVER SOUTHEAST BAY OF BENGAL AND NEIGHBOURHOOD AROUND 9TH NOVEMBER. IT IS LIKELY TO BECOME MORE MARKED & MOVE WEST-NORTHWESTWARDS TOWARDS NORTH TAMIL NADU COAST DURING THE SUBSEQUENT 48 HOURS.

SCATTERED LOW AND MEDIUM CLOUDS WITH EMBEDDED INTENSE TO VERY INTENSE CONVECTION LAY OVER SOUTHEAST BAY OF BENGAL AND ANDAMAN SEA. SCATTERED LOW AND MEDIUM CLOUDS WITH EMBEDDED MODERATE TO INTENSE CONVECTION LAY OVER WESTCENTRAL & SOUTHWEST BAY OF BENGAL.

PROBABILITY OF CYCLOGENESIS (FORMATION OF DEPRESSION) DURING NEXT 120 HRS:

24 HOURS	24-48 HOURS	48-72 HOURS	72-96 HOURS	96-120 HOURS
NIL	NIL	NIL	NIL	LOW

ARABIAN SEA:

YESTERDAY'S LOW PRESSURE AREA OVER SOUTHEAST AND ADJOINING EASTCENTRAL ARABIAN SEA LAY AS A WELL MARKED LOW PRESSURE AREA OVER EASTCENTRAL ARABIAN SEA (AS) AT 0300 UTC OF TODAY, THE 6TH NOVEMBER, 2021. ASSOCIATED CYCLONIC CIRCULATION EXTENDS UPTO 5.8 KM ABOVE MEAN SEA LEVEL. IT IS LIKELY TO MOVE NORTH-NORTHWESTWARDS AND CONCENTRATE INTO A DEPRESSION OVER THE SAME REGION DURING NEXT 24 HOURS. THEN IT IS LIKELY TO MOVE WEST-NORTHWESTWARDS.

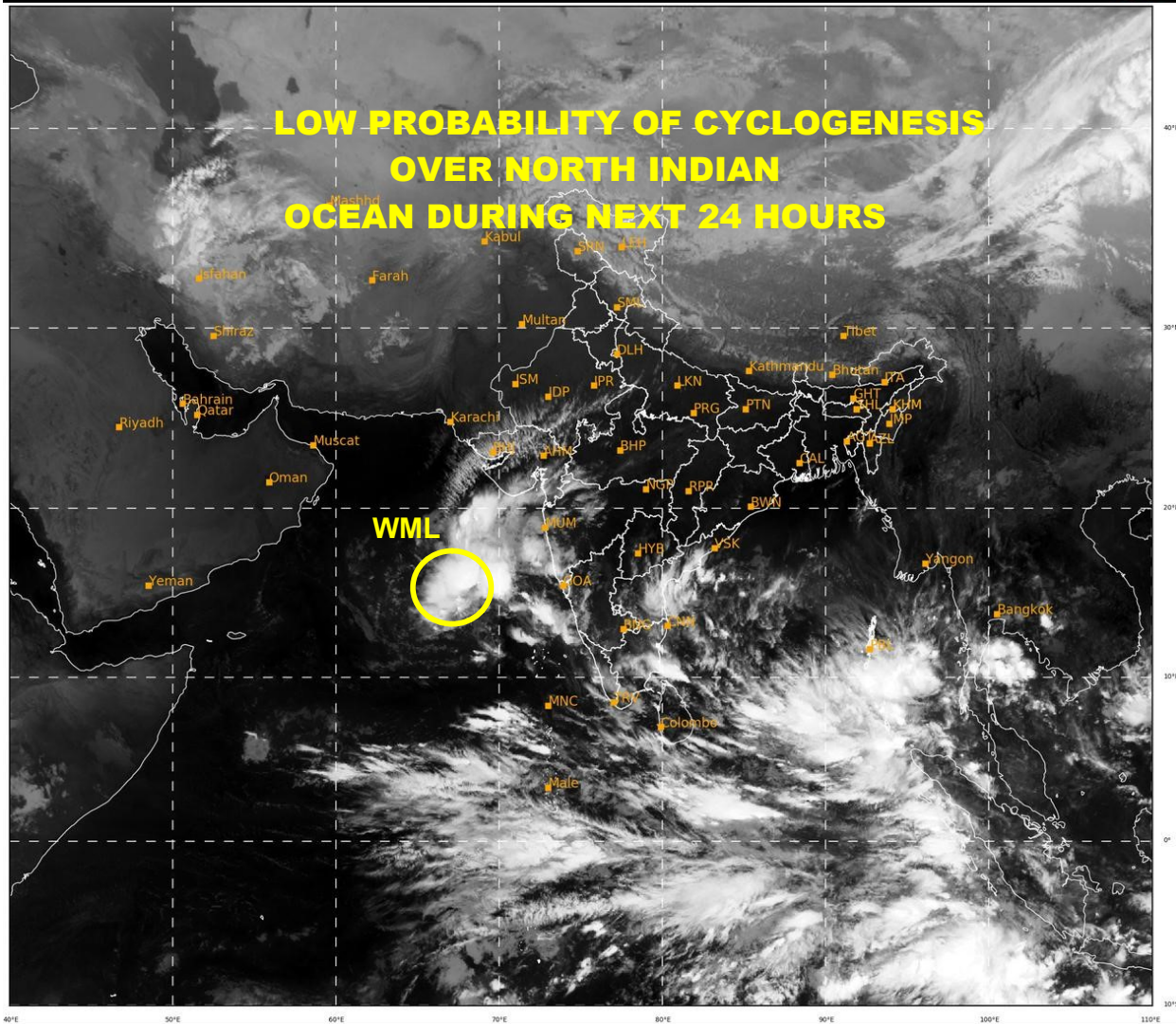
SCATTERED TO BROKEN LOW AND MEDIUM CLOUDS WITH EMBEDDED INTENSE TO VERY INTENSE CONVECTION LAY OVER EASTCENTRAL ARABIAN SEA (MINIMUM CTT - 85°C). SCATTERED LOW AND MEDIUM CLOUDS WITH EMBEDDED MODERATE TO INTENSE CONVECTION LAY OVER NORTHEAST ARABIAN SEA, GULF OF CAMBAY, SOUTHEAST ARABIAN SEA & COMORIN.

PROBABILITY OF CYCLOGENESIS (FORMATION OF DEPRESSION) DURING NEXT 120 HRS:

24 HOURS	24-48 HOURS	48-72 HOURS	72-96 HOURS	96-120 HOURS
LOW	MODERATE	MODERATE	LOW	NIL

REMARKS: THE CONVECTIVELY ACTIVE PHASE OF MADDEN JULIAN OSCILLATION IS CURRENTLY IN PHASE 3, WITH AMPLITUDE LESS THAN 1. IT IS LIKELY TO ENTER INTO PHASE 4 AROUND 9TH NOVEMBER AND FURTHER PROPAGATE EASTWARDS WITH AMPLITUDE LESS THAN 1 DURING THE SUBSEQUENT 2-3 DAYS. HENCE THE PHASE OF MJO WILL SUPPORT ENHANCEMENT OF CONVECTIVE ACTIVITY OVER THE NORTH INDIAN OCEAN DURING THE NEXT 5 DAYS. THE SEA SURFACE TEMPERATURE (28-29°C) AND OCEAN THERMAL ENERGY OVER SOUTHEAST & EAST-CENTRAL AS ARE FAVOURABLE TO SUPPORT CONVECTION. VERTICAL WIND SHEAR IS LOW (5-10 KNOTS) OVER SOUTHEAST & ADJOINING EAST-CENTRAL AS AND THE SHEAR TENDENCY IS NEUTRAL OVER THE REGION. HOWEVER IT IS HIGH TO THE NORTH OF THE PRESENT LOCATION OF THE SYSTEM. THE LOW LEVEL CONVERGENCE IS $5-10 \times 10^{-5} \text{ S}^{-1}$ OVER SOUTHEAST AS. THE UPPER-LEVEL DIVERGENCE IS ALSO $5-10 \times 10^{-5} \text{ S}^{-1}$ OVER SOUTHEAST AND ADJOINING EAST-CENTRAL AS. THE LOW LEVEL CYCLONIC VORTICITY IS AROUND ($50-60 \times 10^{-6} \text{ S}^{-1}$) AND IT EXTENDS UPTO MID-TROPOSPHERIC LEVELS OVER EAST-CENTRAL AS. THE UPPER TROPOSPHERIC RIDGE NOW PASSES ROUGHLY ALONG LAT. 15°N OVER THE AS. A MOIST ENVIRONMENT, AS INDICATED BY THE TOTAL PRECIPITABLE WATER VAPOUR IMAGERIES PREVAILS OVER THE SOUTHEAST AND ADJOINING EAST-CENTRAL AS. A FEW OF THE NUMERICAL MODELS ARE SUGGESTING THAT THE PRESENT WELL MARKED LOW PRESURE AREA COULD MOVE NORTH-NORTHWESTWARDS AND CONCENTRATE INTO A DEPRESSION BY 00 UTC OF 7TH NOVEMBER. NCUM GROUP OF MODELS, ALONE INDICATE ITS WEST-NORTHWESTWARD MOVEMENT AND FURTHER INTENSIFICATION INTO A CYCLONIC STORM OVER WESTCENTRAL AS AROUND 11TH NOVEMBER. ALL OTHER MODELS ARE INDICATING SUBSEQUENT WEAKENING.

A FEW OF THE MODELS (IMD GFS & NCEP GFS) ARE ALSO INDICATING FURTHER INTENSIFICATION OF THE LIKELY LOW PRESSURE AREA OVER SOUTHEAST BOB UPTO THE STAGE OF A CYCLONIC STORM OVER SOUTHWEST BOB AROUND 11TH NOVEMBER. THE PRESENCE OF NEAR EQUATORIAL CONVERGENCE ZONE, LOW LEVEL VORTICITY, THE SEA SURFACE TEMPERATURE (29-30°C) AND HIGH OCEAN THERMAL ENERGY OVER SOUTHEAST BOB ARE FAVOURABLE TO SUPPORT CONVECTION OVER THIS REGION AS WELL.



524

938

IMD, DELHI

WML-WELL MARKED LOW PRESSURE AREA

PROBABILITY OF CYCLOGENESIS (FORMATION OF DEPRESSION):NIL: 0%, LOW: 1-25%, FAIR: 26-50%, MODERATE: 51-75% AND HIGH: 76-100%
This is a guidance Bulletin for the WMO/ESCAP Panel Member countries., Please visit respective National websites for Country specific Bulletins